

AREA TABLE				
LOT	AREA (SQ. FT.)	LOT AREA (ACRES)	AREA (ACRES)	
1	20,334	0.46	18,125	0.44
2	18,534	0.42	16,325	0.41
3	16,734	0.38	14,525	0.37
4	14,934	0.34	12,725	0.33
5	13,134	0.30	10,925	0.29
6	11,334	0.26	9,125	0.25
7	9,534	0.22	7,325	0.21
8	7,734	0.18	5,525	0.17
9	5,934	0.14	3,725	0.13
10	4,134	0.10	1,925	0.09
11	2,334	0.06	1,125	0.05
12	500	0.01	0	0.00
13	500	0.01	0	0.00
14	500	0.01	0	0.00
15	500	0.01	0	0.00
16	500	0.01	0	0.00
17	500	0.01	0	0.00
18	500	0.01	0	0.00
19	500	0.01	0	0.00
20	500	0.01	0	0.00
21	500	0.01	0	0.00
22	500	0.01	0	0.00
23	500	0.01	0	0.00
24	500	0.01	0	0.00
25	500	0.01	0	0.00
26	500	0.01	0	0.00
27	500	0.01	0	0.00
28	500	0.01	0	0.00
29	500	0.01	0	0.00
30	500	0.01	0	0.00
31	500	0.01	0	0.00
32	500	0.01	0	0.00
33	500	0.01	0	0.00
34	500	0.01	0	0.00
35	500	0.01	0	0.00
36	500	0.01	0	0.00
37	500	0.01	0	0.00
38	500	0.01	0	0.00
39	500	0.01	0	0.00
40	500	0.01	0	0.00
41	500	0.01	0	0.00
42	500	0.01	0	0.00
43	500	0.01	0	0.00
44	500	0.01	0	0.00
45	500	0.01	0	0.00
46	500	0.01	0	0.00
47	500	0.01	0	0.00
48	500	0.01	0	0.00
49	500	0.01	0	0.00
50	500	0.01	0	0.00
51	500	0.01	0	0.00
52	500	0.01	0	0.00
53	500	0.01	0	0.00
54	500	0.01	0	0.00
55	500	0.01	0	0.00
56	500	0.01	0	0.00
57	500	0.01	0	0.00
58	500	0.01	0	0.00
59	500	0.01	0	0.00
60	500	0.01	0	0.00
61	500	0.01	0	0.00
62	500	0.01	0	0.00
63	500	0.01	0	0.00
64	500	0.01	0	0.00
65	500	0.01	0	0.00
66	500	0.01	0	0.00
67	500	0.01	0	0.00
68	500	0.01	0	0.00
69	500	0.01	0	0.00
70	500	0.01	0	0.00
71	500	0.01	0	0.00
72	500	0.01	0	0.00
73	500	0.01	0	0.00
74	500	0.01	0	0.00
75	500	0.01	0	0.00
76	500	0.01	0	0.00
77	500	0.01	0	0.00
78	500	0.01	0	0.00
79	500	0.01	0	0.00
80	500	0.01	0	0.00
81	500	0.01	0	0.00
82	500	0.01	0	0.00
83	500	0.01	0	0.00
84	500	0.01	0	0.00
85	500	0.01	0	0.00
86	500	0.01	0	0.00
87	500	0.01	0	0.00
88	500	0.01	0	0.00
89	500	0.01	0	0.00
90	500	0.01	0	0.00
91	500	0.01	0	0.00
92	500	0.01	0	0.00
93	500	0.01	0	0.00
94	500	0.01	0	0.00
95	500	0.01	0	0.00
96	500	0.01	0	0.00
97	500	0.01	0	0.00
98	500	0.01	0	0.00
99	500	0.01	0	0.00
100	500	0.01	0	0.00

RESERVE TABLE			
RESERVE	AREA (SQ. FT.)	RESERVE AREA (ACRES)	USE
RESERVE "A"	1,700	0.04	LANDSCAPE AMENITY
RESERVE "B"	1,700	0.04	LANDSCAPE AMENITY
RESERVE "C"	1,700	0.04	LANDSCAPE AMENITY
RESERVE "D"	1,700	0.04	LANDSCAPE AMENITY
RESERVE "E"	1,700	0.04	LANDSCAPE AMENITY
RESERVE "F"	1,700	0.04	LANDSCAPE AMENITY
RESERVE "G"	1,700	0.04	LANDSCAPE AMENITY
RESERVE "H"	1,700	0.04	LANDSCAPE AMENITY
RESERVE "I"	1,700	0.04	LANDSCAPE AMENITY
RESERVE "J"	1,700	0.04	LANDSCAPE AMENITY
RESERVE "K"	1,700	0.04	LANDSCAPE AMENITY
RESERVE "L"	1,700	0.04	LANDSCAPE AMENITY
RESERVE "M"	1,700	0.04	LANDSCAPE AMENITY
RESERVE "N"	1,700	0.04	LANDSCAPE AMENITY
RESERVE "O"	1,700	0.04	LANDSCAPE AMENITY
RESERVE "P"	1,700	0.04	LANDSCAPE AMENITY
RESERVE "Q"	1,700	0.04	LANDSCAPE AMENITY
RESERVE "R"	1,700	0.04	LANDSCAPE AMENITY
RESERVE "S"	1,700	0.04	LANDSCAPE AMENITY
RESERVE "T"	1,700	0.04	LANDSCAPE AMENITY
RESERVE "U"	1,700	0.04	LANDSCAPE AMENITY
RESERVE "V"	1,700	0.04	LANDSCAPE AMENITY
RESERVE "W"	1,700	0.04	LANDSCAPE AMENITY
RESERVE "X"	1,700	0.04	LANDSCAPE AMENITY
RESERVE "Y"	1,700	0.04	LANDSCAPE AMENITY
RESERVE "Z"	1,700	0.04	LANDSCAPE AMENITY

LINE TABLE		
LINE	DISTANCE	BEARING
L1	100.00	S 89°50'27" E
L2	100.00	S 89°50'27" E
L3	100.00	S 89°50'27" E
L4	100.00	S 89°50'27" E
L5	100.00	S 89°50'27" E
L6	100.00	S 89°50'27" E
L7	100.00	S 89°50'27" E
L8	100.00	S 89°50'27" E
L9	100.00	S 89°50'27" E
L10	100.00	S 89°50'27" E
L11	100.00	S 89°50'27" E
L12	100.00	S 89°50'27" E
L13	100.00	S 89°50'27" E
L14	100.00	S 89°50'27" E
L15	100.00	S 89°50'27" E
L16	100.00	S 89°50'27" E
L17	100.00	S 89°50'27" E
L18	100.00	S 89°50'27" E
L19	100.00	S 89°50'27" E
L20	100.00	S 89°50'27" E
L21	100.00	S 89°50'27" E
L22	100.00	S 89°50'27" E
L23	100.00	S 89°50'27" E
L24	100.00	S 89°50'27" E
L25	100.00	S 89°50'27" E
L26	100.00	S 89°50'27" E
L27	100.00	S 89°50'27" E
L28	100.00	S 89°50'27" E
L29	100.00	S 89°50'27" E
L30	100.00	S 89°50'27" E
L31	100.00	S 89°50'27" E
L32	100.00	S 89°50'27" E
L33	100.00	S 89°50'27" E
L34	100.00	S 89°50'27" E
L35	100.00	S 89°50'27" E
L36	100.00	S 89°50'27" E
L37	100.00	S 89°50'27" E
L38	100.00	S 89°50'27" E
L39	100.00	S 89°50'27" E
L40	100.00	S 89°50'27" E
L41	100.00	S 89°50'27" E
L42	100.00	S 89°50'27" E
L43	100.00	S 89°50'27" E
L44	100.00	S 89°50'27" E
L45	100.00	S 89°50'27" E
L46	100.00	S 89°50'27" E
L47	100.00	S 89°50'27" E
L48	100.00	S 89°50'27" E
L49	100.00	S 89°50'27" E
L50	100.00	S 89°50'27" E
L51	100.00	S 89°50'27" E
L52	100.00	S 89°50'27" E
L53	100.00	S 89°50'27" E
L54	100.00	S 89°50'27" E
L55	100.00	S 89°50'27" E
L56	100.00	S 89°50'27" E
L57	100.00	S 89°50'27" E
L58	100.00	S 89°50'27" E
L59	100.00	S 89°50'27" E
L60	100.00	S 89°50'27" E
L61	100.00	S 89°50'27" E
L62	100.00	S 89°50'27" E
L63	100.00	S 89°50'27" E
L64	100.00	S 89°50'27" E
L65	100.00	S 89°50'27" E
L66	100.00	S 89°50'27" E
L67	100.00	S 89°50'27" E
L68	100.00	S 89°50'27" E
L69	100.00	S 89°50'27" E
L70	100.00	S 89°50'27" E
L71	100.00	S 89°50'27" E
L72	100.00	S 89°50'27" E
L73	100.00	S 89°50'27" E
L74	100.00	S 89°50'27" E
L75	100.00	S 89°50'27" E
L76	100.00	S 89°50'27" E
L77	100.00	S 89°50'27" E
L78	100.00	S 89°50'27" E
L79	100.00	S 89°50'27" E
L80	100.00	S 89°50'27" E
L81	100.00	S 89°50'27" E
L82	100.00	S 89°50'27" E
L83	100.00	S 89°50'27" E
L84	100.00	S 89°50'27" E
L85	100.00	S 89°50'27" E
L86	100.00	S 89°50'27" E
L87	100.00	S 89°50'27" E
L88	100.00	S 89°50'27" E
L89	100.00	S 89°50'27" E
L90	100.00	S 89°50'27" E
L91	100.00	S 89°50'27" E
L92	100.00	S 89°50'27" E
L93	100.00	S 89°50'27" E
L94	100.00	S 89°50'27" E
L95	100.00	S 89°50'27" E
L96	100.00	S 89°50'27" E
L97	100.00	S 89°50'27" E
L98	100.00	S 89°50'27" E
L99	100.00	S 89°50'27" E
L100	100.00	S 89°50'27" E

# TOWER ROAD ESTATES PHASE I

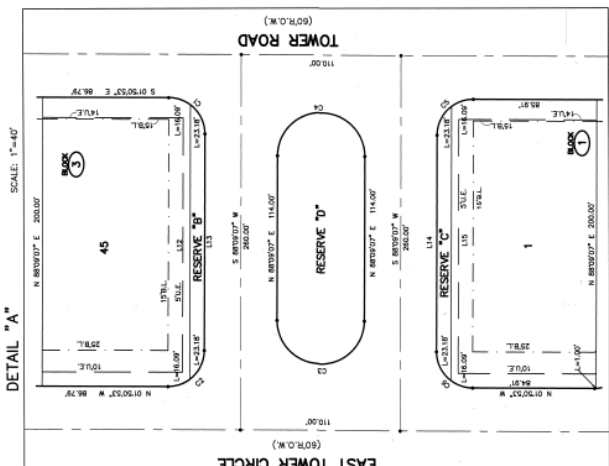
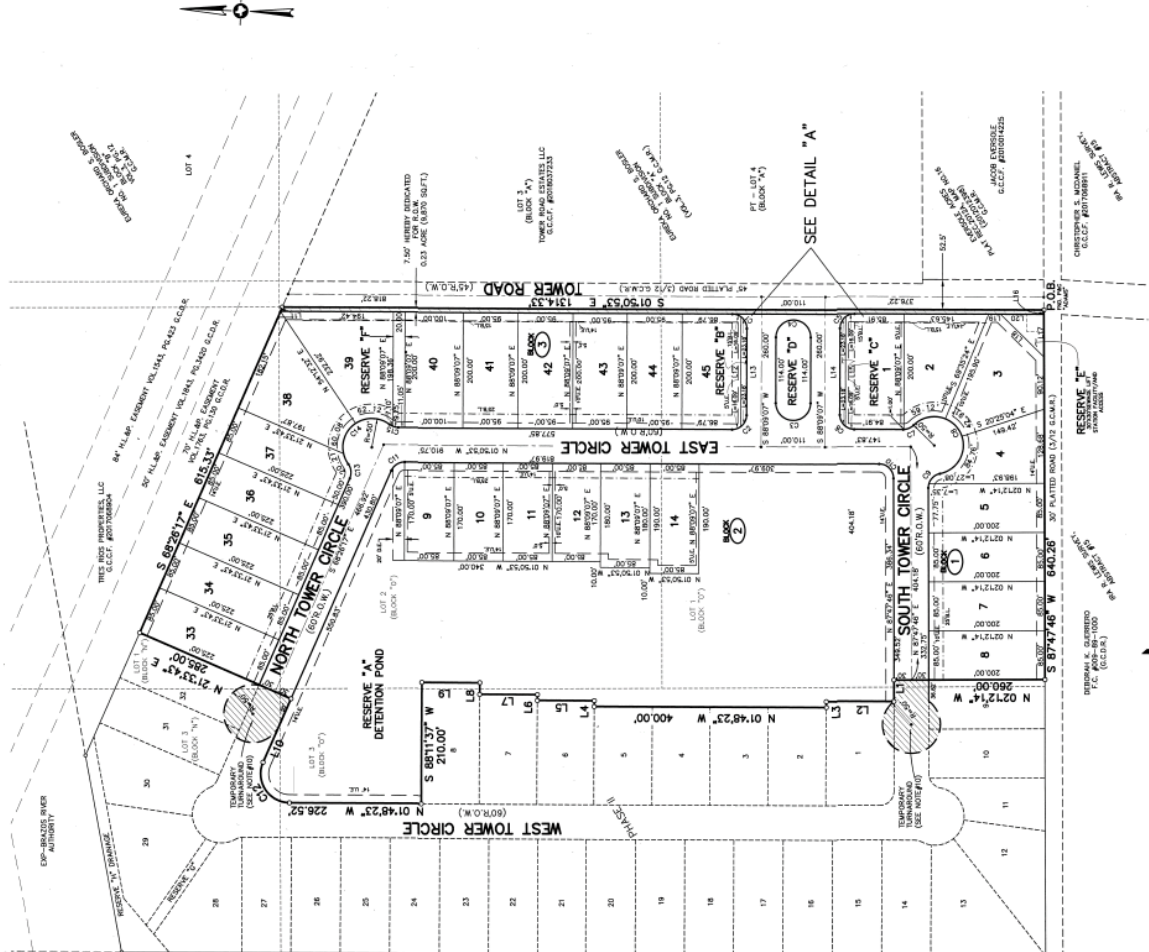
A SUBDIVISION OF 23.22 ACRES OF LAND  
BEING A REPLAT OF PART OF  
LOTS 1 AND 3 BLOCK "N", AND  
LOTS 1, 2 AND 3 BLOCK "O" OF  
EUREKA ORCHARD S. BOSLER NO. 1 SUBDIVISION  
VOLUME 3, PAGE 12, G.C.M.R.

SANTA FE NO. SD 190701  
GALVESTON COUNTY, TEXAS

27 LOTS 3 BLOCKS 6 RESERVES

OWNER: Gregory S. Stone, Member  
of the State Bar of Texas  
P.O. Box 630, Santa Fe, TX 77310  
PH: (281) 808-9783  
OWNER: Gordon J. Hall, Member  
of the State Bar of Texas  
P.O. Box 630, Santa Fe, TX 77310  
PH: (281) 217-5655

OWNER: Gregory S. Stone, Member  
of the State Bar of Texas  
P.O. Box 630, Santa Fe, TX 77310  
PH: (281) 808-9783  
OWNER: Gordon J. Hall, Member  
of the State Bar of Texas  
P.O. Box 630, Santa Fe, TX 77310  
PH: (281) 217-5655



CURVE	RADIUS	DELTA	ARC	BEARING	CHORD
C1	25.00'	90°00'00"	39.27'	S 43°00'00" W	35.36'
C2	25.00'	90°00'00"	39.27'	S 43°00'00" W	35.36'
C3	25.00'	90°00'00"	39.27'	S 43°00'00" W	35.36'
C4	25.00'	90°00'00"	39.27'	S 43°00'00" W	35.36'
C5	25.00'	90°00'00"	39.27'	S 43°00'00" W	35.36'
C6	25.00'	90°00'00"	39.27'	S 43°00'00" W	35.36'
C7	25.00'	90°00'00"	39.27'	S 43°00'00" W	35.36'
C8	25.00'	90°00'00"	39.27'	S 43°00'00" W	35.36'
C9	25.00'	90°00'00"	39.27'	S 43°00'00" W	35.36'
C10	25.00'	90°00'00"	39.27'	S 43°00'00" W	35.36'
C11	25.00'	90°00'00"	39.27'	S 43°00'00" W	35.36'
C12	25.00'	90°00'00"	39.27'	S 43°00'00" W	35.36'
C13	25.00'	90°00'00"	39.27'	S 43°00'00" W	35.36'
C14	25.00'	90°00'00"	39.27'	S 43°00'00" W	35.36'
C15	25.00'	90°00'00"	39.27'	S 43°00'00" W	35.36'
C16	25.00'	90°00'00"	39.27'	S 43°00'00" W	35.36'
C17	25.00'	90°00'00"	39.27'	S 43°00'00" W	35.36'
C18	25.00'	90°00'00"	39.27'	S 43°00'00" W	35.36'
C19	25.00'	90°00'00"	39.27'	S 43°00'00" W	35.36'
C20	25.00'	90°00'00"	39.27'	S 43°00'00" W	35.36'
C21	25.00'	90°00'00"	39.27'	S 43°00'00" W	35.36'
C22	25.00'	90°00'00"	39.27'	S 43°00'00" W	35.36'
C23	25.00'	90°00'00"	39.27'		